

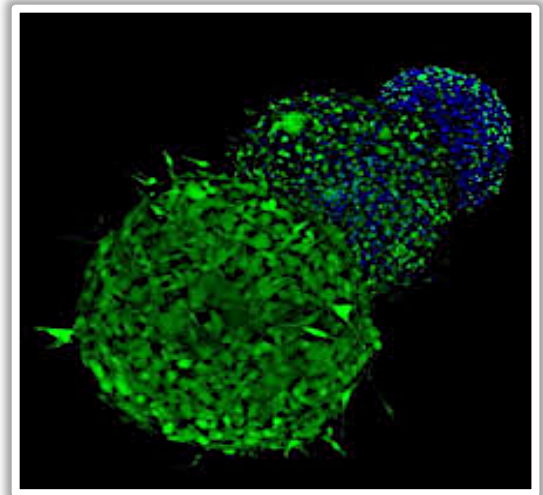
Meet the Team

Villanueva Lab



About Us:

- ❖ **Our goal:** contribute to the development of effective/long-lasting therapies for melanoma
- ❖ We strive to conduct impactful, novel, and rigorous science to combat melanoma and improve the health of all communities
- ❖ Members of our team come from 4 continents, speak different languages and dance to any music
- ❖ We aim at supporting all our team member's scientific and professional development, encouraging creativity and independence
- ❖ We believe that diversity, equity, & inclusion are critical to promote innovation and collaboration.



Jessie Villanueva, PhD

Principal Investigator

Research Project: Melanoma drug targets & mechanisms of drug resistance

University of Miami, Miller School of Medicine

Hobbies: Traveling, dancing, table tennis





Ricky Brathwaite, MS

Graduate Student

Project: New therapeutic targets for acral melanoma

University of Pennsylvania, Cancer Biology PhD

Hobbies: Basketball, cataloging Philly's mural scene, and eating ice cream

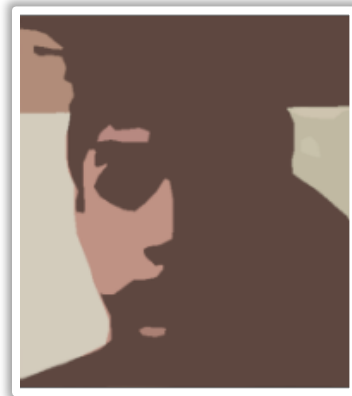
Segundo Del Aguila, BSc

Research Assistant

Project: Targeting TERT in Melanoma

Universidad Peruana Cayetano Heredia

Hobbies: Dancing, swimming, and anime



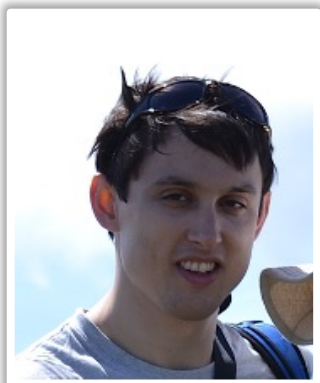
Adam Guterres, PhD

Associate Staff Scientist

Project: Identifying therapeutic vulnerabilities of NRAS^{Mut} melanoma

University of Cambridge

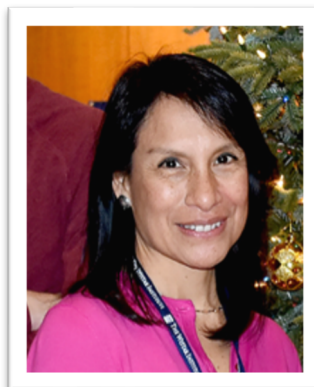
Hobbies: Bouldering, rugby



Rocio Inga, MSc

Research Assistant

Project: Targeting TERT in Melanoma
Universidad Peruana Cayetano Heredia
Hobbies: Photography, Hiking, Dance,
Orchids



Brittany Lipchick, PhD

Postdoctoral Fellow

Project: Investigating the role of S6K2 in NRAS^{MUT} melanoma

State University of New York at Buffalo / Roswell Park Cancer Center

Hobbies: Spin, Gardening, Dogs



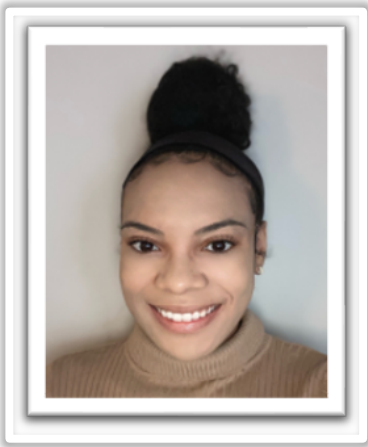
Arooje Nasir, MS

Graduate Student

University Pennsylvania - Biology

Project: S6K signaling in melanoma

Hobbies: Photography, coloring and Pakistani dramas



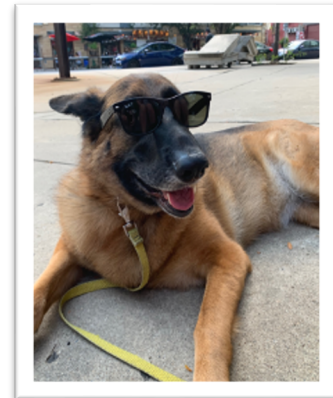
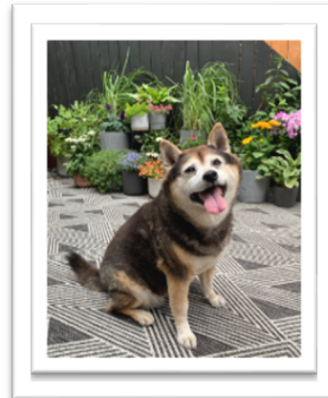
Lamae Oberton, BS Animal Science Research Assistant

Project: Pre-clinical studies in Melanoma
Delaware Valley University

Hobbies: Skating, Reading, Writing books, and Art
Modelling

LAB POOCHES

SAYRI Sheldon of Brycellin



LILLY

ZOOSA

Current & Past Research Funding:



Goldblum Family Healthcare Fund



Martha Rogers Trust

NCI PDX Development and Trial Centers